

# Construction Solutions

Lighter | Faster | Easier | Affordable



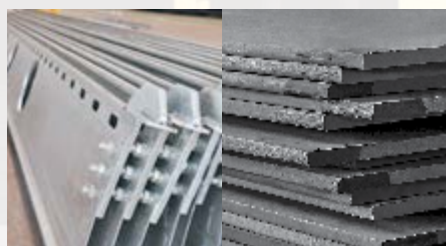


# About us

Jindal Steel & Power Ltd. is one of India's fastest growing and largest integrated steel manufacturers, significantly present in the steel, power, mining and infrastructure segment. Part of over US\$ 18 billion diversified O. P. Jindal Group, JSPL's operations span across Asia, Africa and Australia. Led by Shri Naveen Jindal the Company produces economical and efficient steel and power through backward and forward integration. From the widest flat products to a whole range of long products, JSPL today has a product portfolio that caters to markets across the steel value chain. Over the years, JSPL has been a pioneers in manufacturing steel and allied commodities relevant to the Structural Steel Industry.

As a natural progression, JSPL forayed into the Construction Materials & Solutions Business to harness the potential of need for lighter, faster, easier and affordable method of construction. In the age of quick turn-over of projects, customers are looking for 'Single Window Solution' from start to finish. To cater to this and to ensure a cost-effective and efficient construction solution process, JSPL through continuous innovation offers engineering based Customised Construction Solutions to its entire clientele. These Solutions, using 550 MPA Steel Plates or 450 MPA Hot Rolled Sections ensures an Optimum steel consumption to build a Building or Structure, over presently used E350 grade. Thus, it reduces project gestation period and overall cost, while scoring additional green points for building validation.

## Our Capabilities



**High Grade Steel & Innovative Construction Solutions**

JSPL offers structural steel upto E 550 grade. Innovative solutions include Speedfloor, Cut & Bend TMT Rebar, Weld Mesh TMT Rebar



**In-house Design & Detailing**

JSPL has capability to design and detail multi-storey steel buildings using ETABS, STAAD, TEKLA, AUTOCAD, SKETCHUP



**Supply of Fabricated Structures**

Total Fabrication facilities of 240,000 MT/ annum spread over Punjipatra, Raigarh, Angul and Raipur



# JSPL's Global Footprint



## Business Segments

Steel	Power	Mines And Minerals	Constuction Material and Solutions	Global Ventures
4.75 MTPA (India)	3400 MW (IPP) 1634 MW (CPP) 24 MW (Renewable)	3.11 MTPA	Structural Steel Light Gauge Structure (LGS) Value Added Products Cement & Road Solutions	2 MTPA (Steel, Oman) & Mines and Minerals



### Quality Assurance

JSPL is committed to match best quality standards in the Industry by being customer-centric and emphasizing on 'On Time-In-Full-Delivery'.



### Project Management

JSPL has highly skilled and experienced project managers and site erection managers to manage projects at client sites.



### Erection Supervision

To ensure safe working condition at site during unloading of materials and erection till the completion of project. Also approve necessary erection procedure and ensure proper quality control at site.



# FABRICATION FACILITIES



Fabrication Bay at Punjipatra



Speedfloor M/C



FICEP - Cutting Line



Work premises of Jindal Industrial Park, Punjipatra has RDSO approval for Fabrication & Supply of Steel Bridge Girders



Corimpex - Beam Welding Line



# FABRICATION FACILITIES



FICEP Heavy Duty I/H Beam Cutting and Drilling Line



Corimpex - Beam Welding Line



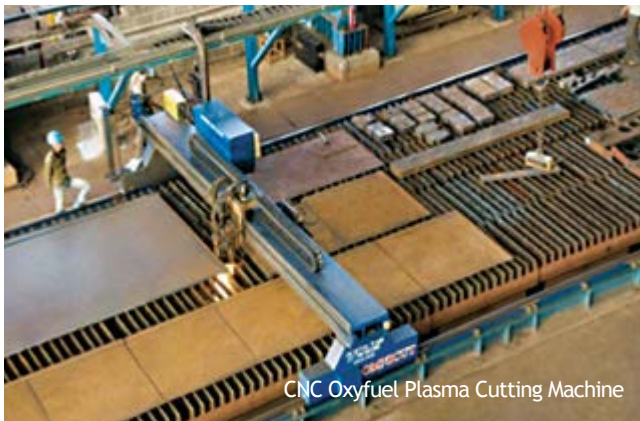
CNC Oxy-Flame Cutting Machine



CNC Messers cutting machine



# FABRICATION FACILITIES



CNC Oxyfuel Plasma Cutting Machine



Plate Bending Machine



Heavy Duty Fabrication Bay



CNC Plano Milling Machine (Waldrich)



Shot Blasting and Painting Enclosures



Plate Mill (Raigarh and Angul)

2.2 MTPA

Rail & Universal Beam Mill Raigarh

0.75 MTPA

Medium & Light Structure Mill Raigarh

0.60 MTPA

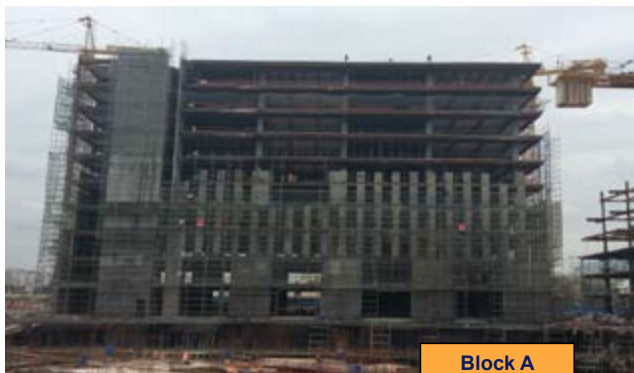
# ROLLING MILL





# COMMERCIAL BUILDING

## Flipkart Campus, Bengaluru



Client	:	Embassy Group through BL Kashyap & Sons Ltd
Location	:	Outer Ring Road, Bengaluru
Area	:	15 Lakh sq ft
Architect	:	RSP India
Consultant	:	Constructure Designs Pvt Ltd
Products used	:	Fabricated E 450 grade Plate built-up sections and E 450 grade hot rolled Parallel Flange Beams





3D Impression



Construction Site

**Client** : Parmesh Construcion Company Ltd.  
**Location** : Noida, Uttar Pradesh  
**Area** : 1 Million sq ft  
**Architect** : Space Combine  
**Consultant** : Vintech Consultants  
**Products used** : Fabricated Plate built-up E 550 grade Columns & E 450 grade Beams and Bracings, Speedfloor



## Festival City, Noida



**Client** : Mist Avenue Pvt Ltd  
**Location** : Plot no.1, Sector 143 B, Noida, UP  
**Area** : 8 Lakh sq ft  
**Architect** : Studio AMK  
**Consultant** : Constructure Designs Pvt Ltd  
**Products used** : Fabricated E 550 grade Plate built-up sections, E 350 grade Bracings, Speedfloor, Jindal Panther TMT Rebars / Weld Mesh



## SARB Multiplex, Jalandhar



**Client** : Sarabh Multiplex through Waho Buildcon Pvt Ltd  
**Location** : Jalandhar, Punjab  
**Area** : 20,000 sq ft  
**Architect** : Davinder Bharadwaj & Co  
**Consultant** : Davinder Bharadwaj & Co  
**Products used** : Supply of E450 High Strength Plates & High Strength Beams and Universal Columns





## Dhirubhai Ambani International Convention and Exhibition Centre, Mumbai



Client : Eversendai  
Location : Mumbai  
Products used : Supply of E450 High Strength Plates & High Strength Beams and Universal Columns



# SPECIAL BUILDING

## Residential Township, Angul



Products used : Fabricated Steel Structure, Speedfloor, Light Gauge Structure (LGS), MGO Board

## OT Extension of Medanta Hospital, Gurgaon



Products used : Speedfloor

## Lounge & Stud Farm of Hyderabad Race Club



Products used : Speedfloor, Light Gauge Structure (LGS)



## Transit Camp for GMR at Chamba



Products used : Light Gauge Structure (LGS), Speedfloor

## Halcyon Phoenix, Hyderabad



Products used : Speedfloor

## Retail Infra, Hyderabad



Products used : Speedfloor



## New Airport Terminal, Vijayawada

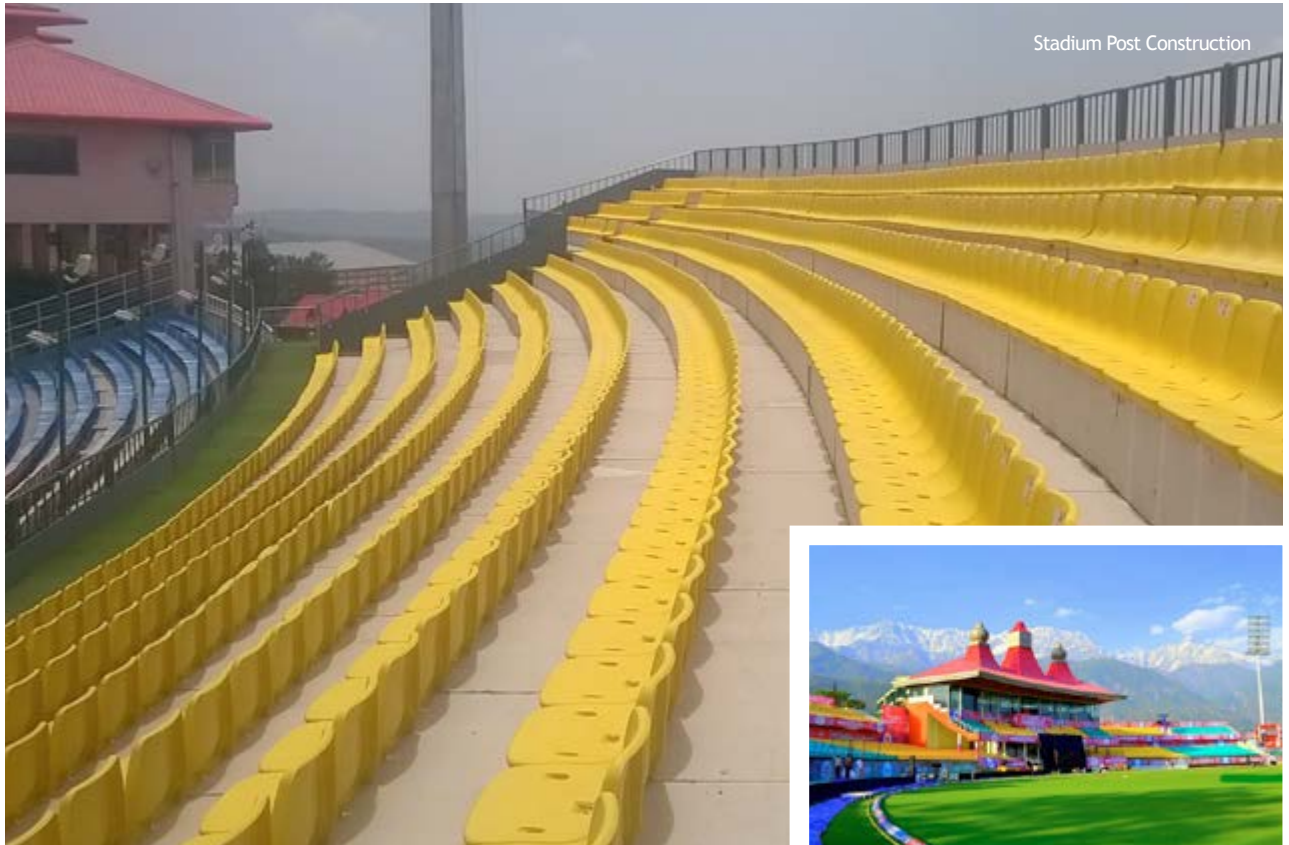


- Client** : Airports Authority of India through Simplex Infrastructures Ltd
- Location** : Vijayawada, Andhra Pradesh
- Architect** : Meinhardt India Pvt. Ltd.
- Consultant** : Meinhardt India Pvt. Ltd.
- Products used** : Fabricated E 350 grade hot rolled Parallel Flange Beams

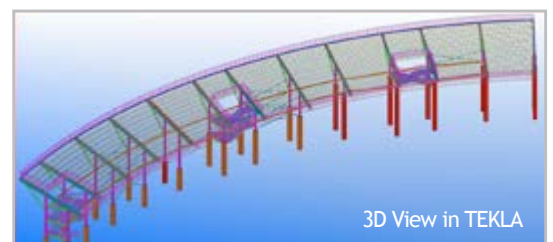




## HPCA Stadium Extension, Dharamshala

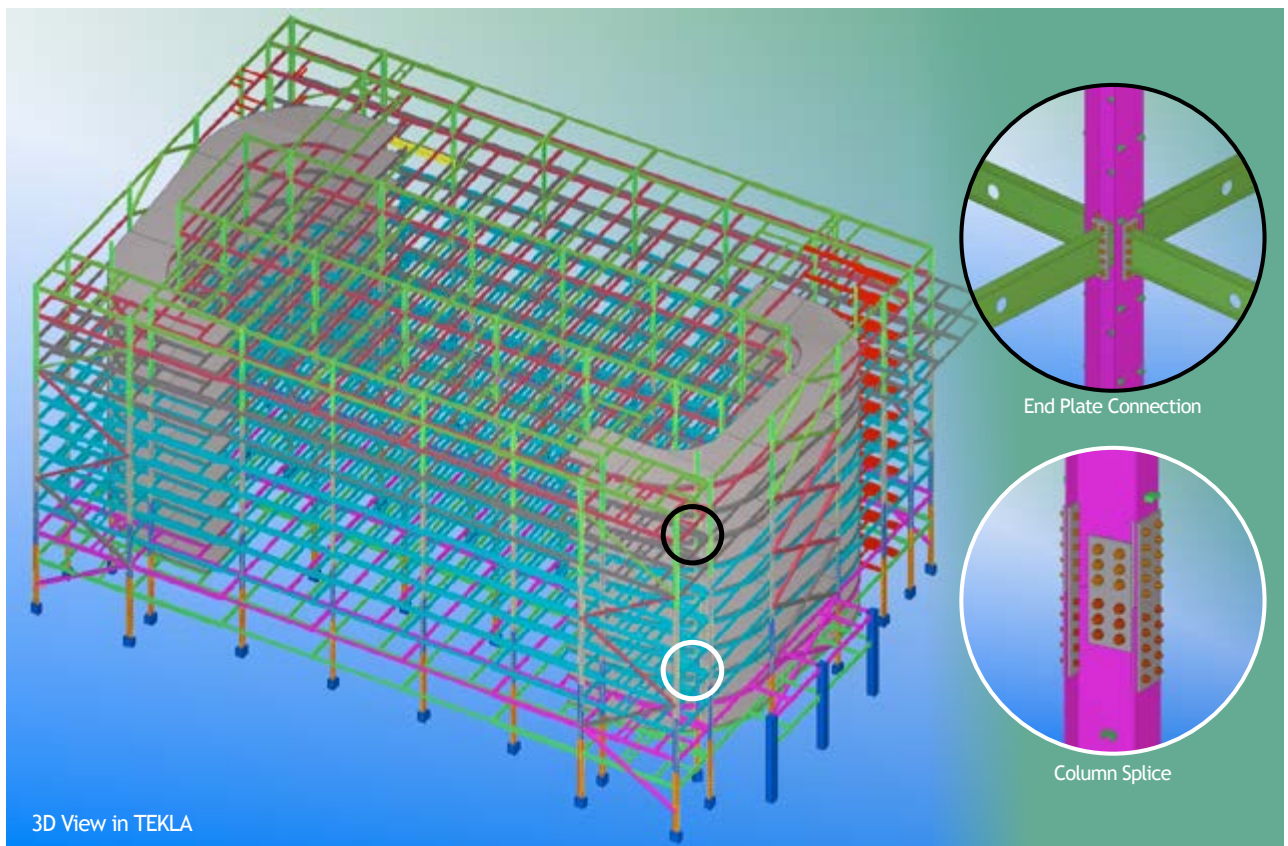


Client : HPCA Cricket Stadium through Star Mercantile  
 Location : Dharmshala, HP  
 Architect : ALA Architects Pvt. Ltd.  
 Consultant : TPC Technical Project Consultants Pvt. Ltd.  
 Products used : Fabricated E 250 grade hot rolled Parallel Flange Beams





## Multi-Level Car Parking



Client	:	Sir Ganga Ram Hospital through Capacit'e Infraprojects Limited
Location	:	New Delhi
Area	:	2.72 Lakh sq ft
Architect	:	Amit Sarma & Associate
Consultant	:	Constructure Design Pvt Ltd
Products used	:	Fabricated E 450 grade Plate built-up sections, E 450 and E 250 grade hot rolled Parallel Flange Beams



## O.P. Jindal Global University



Client : O.P Jindal Global University through Jindal Reality Pvt. Ltd.  
Location : Sonapat, Haryana  
Area : 10 Lakh sq ft  
Architect : SPA Design Pvt. Ltd.  
Consultant : SPA Design Pvt. Ltd.  
Products used : Fabricated E 250 grade Plate built-up sections

## O.P. Jindal School Auditorium



Client : O.P. Jindal School  
Location : Raigarh, Chhattisgarh  
Area : 55,000 sq ft  
Architect : Kamath Design Studio  
Consultant : BMSF Design Consultant Pvt. Ltd.  
Products used : Fabricated E 250 grade Plate built-up sections

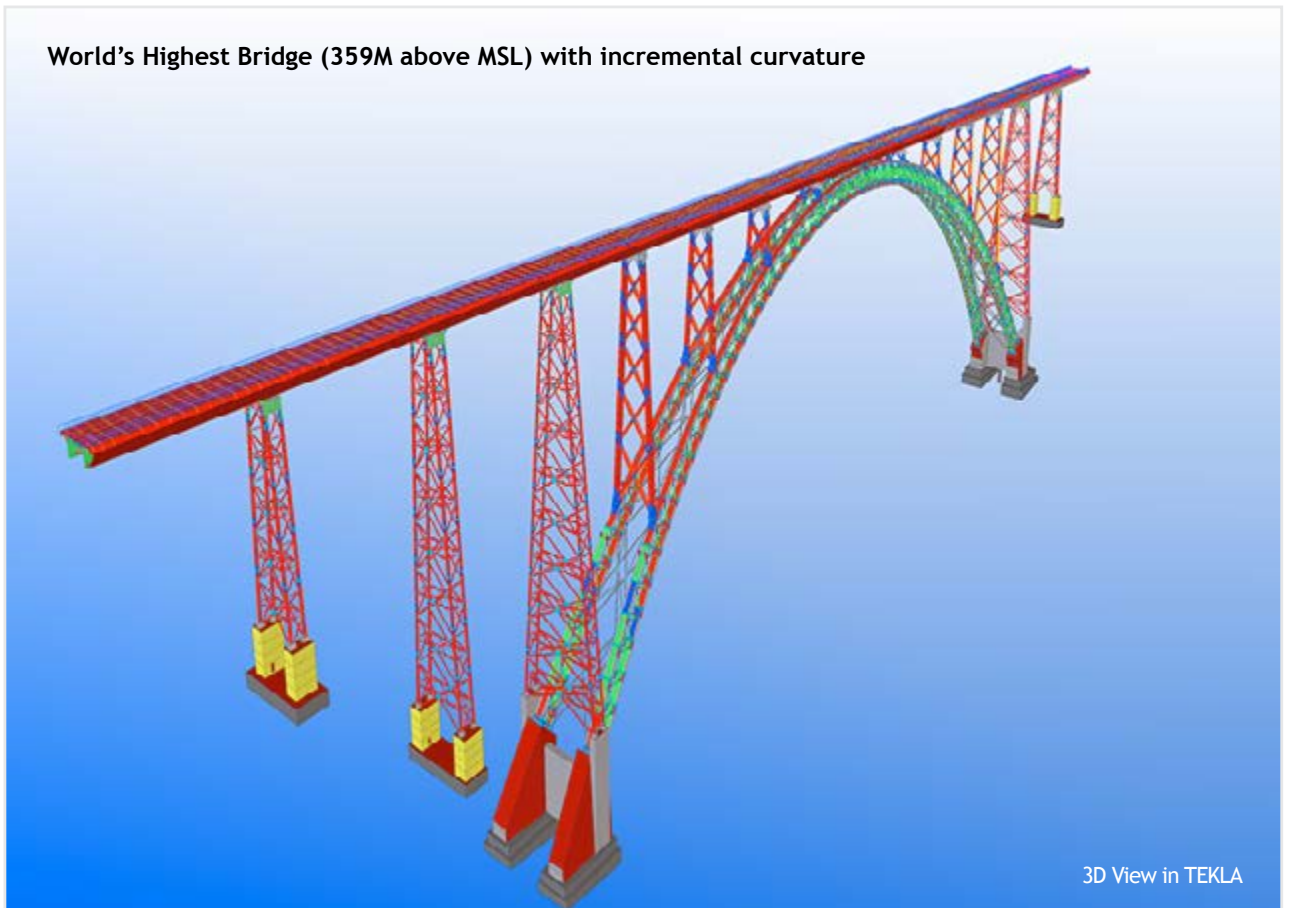


# World's Highest Railway Bridge on Chenab



Representative Image

World's Highest Bridge (359M above MSL) with incremental curvature



3D View in TEKLA

Client	:	Northern Railways through AFCON Infrastructure Ltd.
Location	:	Bakkal to Kauri, Reasi District, J&K
Length	:	1.2 KM
Designed	:	Research Design and Standard Organisation (RDSO)
Products Used	:	Supply of E450 High Strength Plates



## Railway Road Over Bridge (ROB)



Representative Image

Client : Public Works Department (PWD) Odisha through L&T Construction  
Location : Kanaktura Jharsuguda Road Project  
Length : 108 mtr (710 MT)  
Designed : Research Design and Standard Organisation (RDSO)  
Products Used : E250 Plate Built-up Girder

## Bogiebeel Rail & Road Bridge



Client : North-East Frontier Railway through HCC  
Location : Dibrugarh to Dhemaji Districts, Assam  
Length : 5 KM  
Designed : Research Design and Standard Organisation (RDSO)  
Products used : Supply of E410C Cu High Strength Weather Resistant Plates



# ROADS

## National & State Highways



Representative Image



Jindal Panther TMT Rebar



Weldmesh TMT Rebar



Dowel Bar



Light Weight Aggregate



Slag Aggregate



Ground Granulated Blast Furnace Slag



Jindal Panther Cement



Jindal Global Road Stabilizer



Fly Ash / Silo Ash

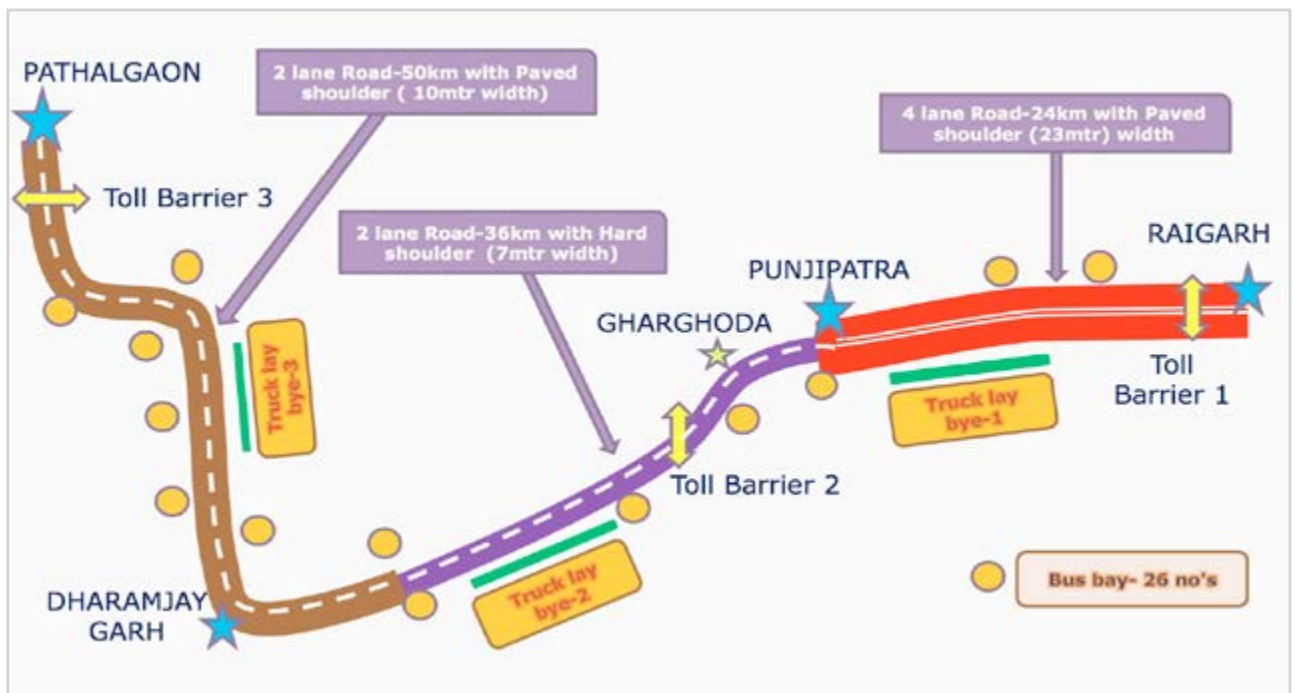


# Raigarh-Pathalgaon Road Development



Representative Image

Development, Operation & Maintenance (2 Laning of 86 km & 4 Laning of 24 km ~ total 110 km) of Raigarh - Punjipatra - Gharghoda - Pathalgaon Road (SH 1 AB) in State Of Chhattisgarh through Public Private Partnership (PPP) on Design, Build, Finance, Operate & Transfer (DBFOT) Toll Basis



Steel Melting Shop (SMS) Slag



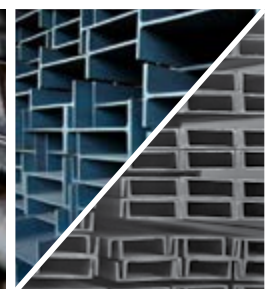
Fly Ash



Jindal Panther Cement



Jindal Panther TMT Rebar



Structural Steel



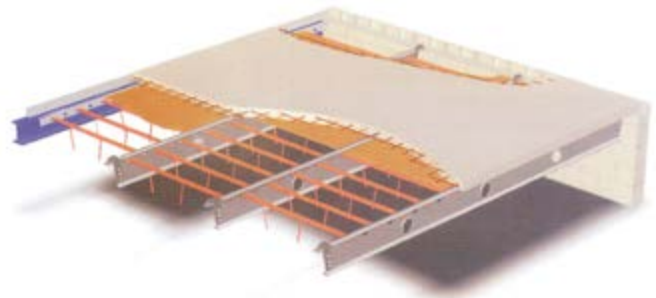
## Speedfloor

Speedfloor, a unique suspended concrete flooring system, is an innovation technology from New Zealand. So quick and easy to install, Speedfloor is a lightweight, cost-effective system that's perfect for multi-storey buildings and car parks.



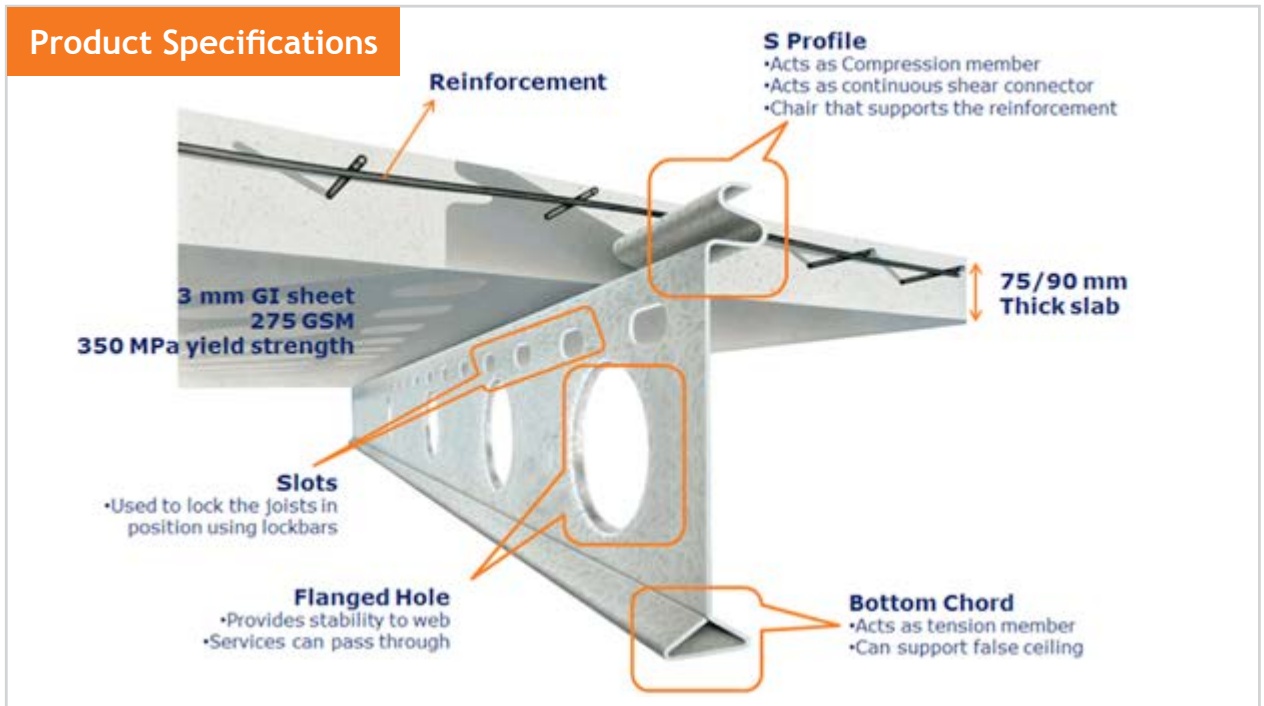
### The Speedfloor advantage

- No propping is required
- Reduces dependency on labour
- Pre-punched holes for accommodating service lines
- Rapid construction
- Multiple floors at a time



Cross-sectional view of Jindal Speedfloor System

### Product Specifications





## Speedfloor Installation Process



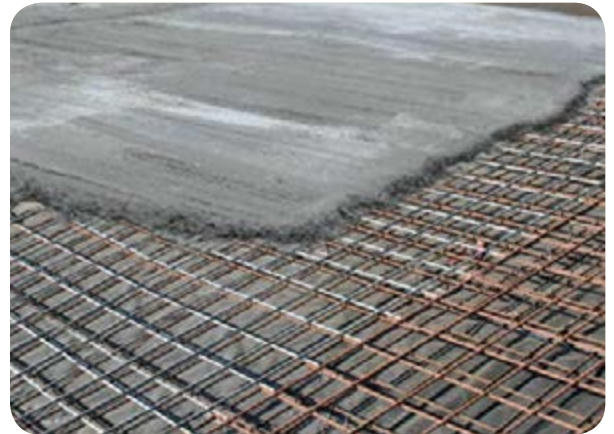
**1** Speedfloor joist lifted into place



**4** Plywood introduced from top



**2** Lock bars slide into pre-punched holes to support the plywood shuttering



**5** Mesh laid out and tied into place. Concrete poured



**3** Lock bars placed approximately 300 mm apart to give plywood support



**6** 3 days after pour lock bar and plywood removed

Please visit our website to view a video on Speedfloor Installation process. Also please do ask our Customer Representative for the Speedfloor Brochure which has more technical information.



## Cut & Bend TMT Rebar

Zero scrap | Less labour intensive | Cost effective | Faster



### Product Range

 TYPE - A	 TYPE - B	 TYPE - C	 TYPE - D
 TYPE - K	 TYPE - L	 TYPE - M	 TYPE - N
 TYPE - U	 TYPE - V	 TYPE - W	 TYPE - X

Diameter of the bar used: 6mm-40mm

Please visit our website to view a video on Cut & Bend manufacturing process of Type - B, C & V (Stirrup)

## Weld Mesh TMT Rebar

Zero scrap | Ready to use | Reduces dependency on labour | Cost effective



### Product specifications

Bar diameter	6 to 12 mm
Aperture	50, 100, 150 and 200 mm
Width X Length	3000 X 6000 mm

Please visit our website to view a video on Weld Mesh manufacturing process



## Bricks and Pavers

High Strength | Zero Breakage | Supreme Finish | Savings in binding mortar and plaster



Bricks



Kerbstone



Rectangular Pavers



I-Pavers

## Light Weight Aggregate (LWA)

Light weight | Eco-friendly | High thermal & fire resistance | High strength with low density

For use in structural concrete, bridges and highways



## Jindal Panther Cement

Unmatched strength | High durability | Corrosion resistant



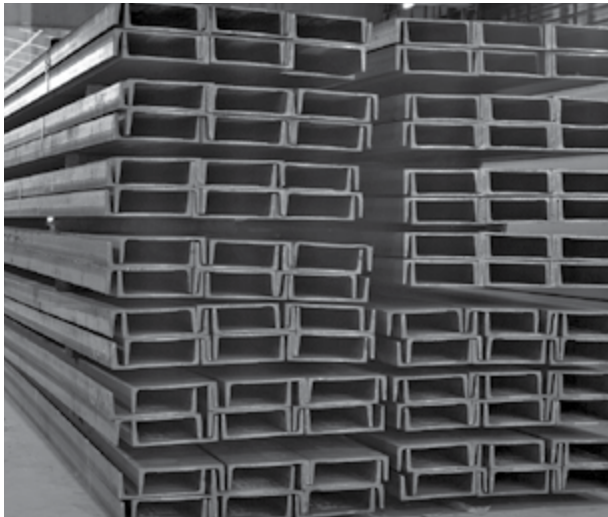


## Parallel Flange Beams & Columns

JSPL manufactures Parallel Flange Beams and Columns in various configurations:

UB Series | UC Series | WPB Series  
NPB Series | IPE Series | HE Series

Beams : Depth 180 mm - 900 mm  
Columns : 152 X 152 to 356 X 406 in cross-section  
Grade : E 250 to E 450



## Channels

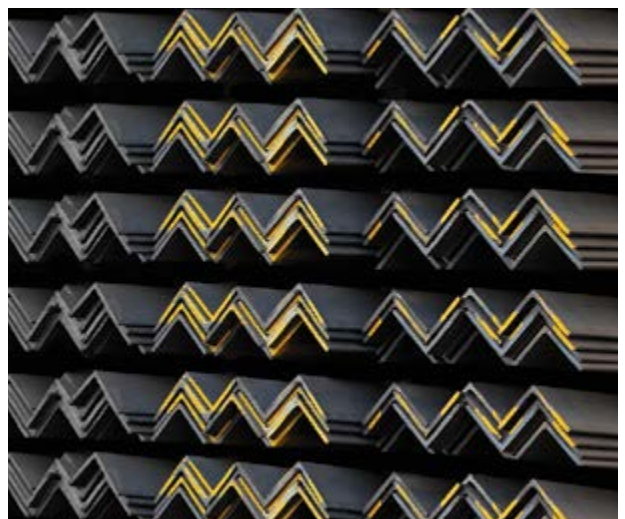
One of the hot rolled structural shapes which JSPL offers is the tapered flange channel which is available in a wide range of sizes and thickness. The shape provides superior structural support, making it an ideal product for frames and braces for building and structural support applications.

ISMC Channels : 75 X 40 to 400 X 100  
in various sectional weights

## Equal Angles

JSPL is the manufacturer of hot rolled equal leg angles which are available in a variety of grades and sizes, making it ideal for structural applications like bracings and general fabrications.

ISA Angles : 50 X 50 to 250 X 250 in various sectional weights



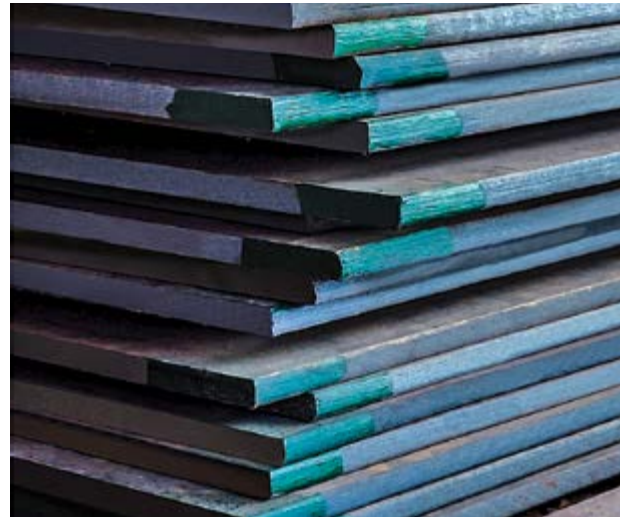
\*\* Please refer to our Product Range Chart for Technical Specifications of various Structural Sections



## Plates

JSPL manufactures plates for bridges, dams, civil structures and for industrial fabrication works. JSPL Plate mill is capable to produce value added plate products.

Grades	: IS 2062 E250 to E550 EN 10025 S235 to S450 ASTM A36, A283/285, A588
Thickness	: 5 to 150 mm
Width	: upto 5000 mm
Length	: upto 18000 mm



## Jindal Panther™ TMT Rebar

Jindal Panther™ TMT Rebars are advanced rebars which are superior to ordinary TMT owing to the HYQST Technology making high strength, high ductility and bendability and high weldability rebar.

Size (in mm)	: 6, 8, 10, 12, 16, 20, 25, IS : 1786-2008
Grades Available	: Fe500, Fe500D, 500D & 600CRS

## Fabricated Steel Structure

JSPL fabricates the following sections as per user's specifications:

- H-type Beams
- I-type Beams
- Box Sections
- Star Columns

Flange Width	: upto 1000 mm
Web Thickness	: 7 to 50 mm
Flange Thickness	: 7 to 80 mm



\*\* Please refer to our Product Range Chart for Technical Specifications of various Structural Sections





## KEY LOCATIONS & SALES NETWORK

### Marketing Head Office, North Regional Office

Jindal Steel & Power Limited  
Plot No-2, Sector-32, Near Exit-10,  
Gurgaon - 122 001, Haryana, INDIA  
Tel: +91 124 6612000 (Board)

### Ahmedabad

Jindal Steel & Power Limited  
806, 8th floor, Iscon Elegance,  
Near Jain Temple, Circle – P,  
Praladnagar Cross Roads,  
SG Highway, Ahmedabad – 380051  
Tel: +91 79 65255502/3

### Corporate Office

Jindal Centre,  
12, Bhikaiji Cama Place,  
New Delhi - 110 066, INDIA  
Tel: +91 11 26188340-50  
Fax: +91 11 26161271

### Registered Office

O.P. Jindal Marg  
Hisar - 125 005,  
Haryana, INDIA  
Tel: +91 1662 222471-84  
Fax: +91 1662 220476

### Chennai

Jindal Steel & Power Limited  
A Block, 6B, 6th Floor, Meena-Kampala Arcade,  
Old No. 113 & 114, New No. 20 & 18,  
Sir Theyagaraya Road, T. Nagar,  
Chennai - 600 017  
Tel: 044-43446956/ 24323530

### Hyderabad

Jindal Steel & Power Limited  
Suite No. 102, 1st Floor  
Cyber Heights, Banjara Hills,  
Road No. 2, Hyderabad - 500 034  
Tel: +91 40 40024878

### Mumbai

Jindal Enclave, 1st Floor,  
Behind Marathe Udyog Bhawan  
New Prabhadevi Road, Prabhadevi  
Mumbai - 400 025  
Tel: +91 22 66241000, 66241031

### Works Raigarh

Kharsia Road, Raigarh - 496 001,  
Chhattisgarh, INDIA  
Tel: +91 7762 227001-05

### Punjabpatra

Jindal Steel and Power Ltd.  
(PREFABRICATION PLANT)  
Plot No. 201 to 204, O.P. Jindal Industrial Park  
Punjabpatra, Raigarh - 496 001 Chhattisgarh

### Angul

Jindal Steel & Power Ltd.  
Chhendipada Road, SH-63,  
At/Po : Jindal Nagar, Pin-759111  
Distt : Angul (ODISHA)  
Tel: +91 6761 254191-95

### Raipur

Jindal Steel & Power Limited  
13 K.M. Stone, G.E. Road, Mandir Hasaud  
Raipur - 492 101, Chhattisgarh  
Tel: +91 77122 71205



✉ [marketingcmb@jspl.com](mailto:marketingcmb@jspl.com) 🌐 [www.jsplconstructionssolutions.com](http://www.jsplconstructionssolutions.com)

🐦 [jsplcorporate](#) [in](#) [Jindal Steel & Power Ltd.](#) [f](#) [jsplcorporate](#) [yt](#) [jsplcorporate](#)



